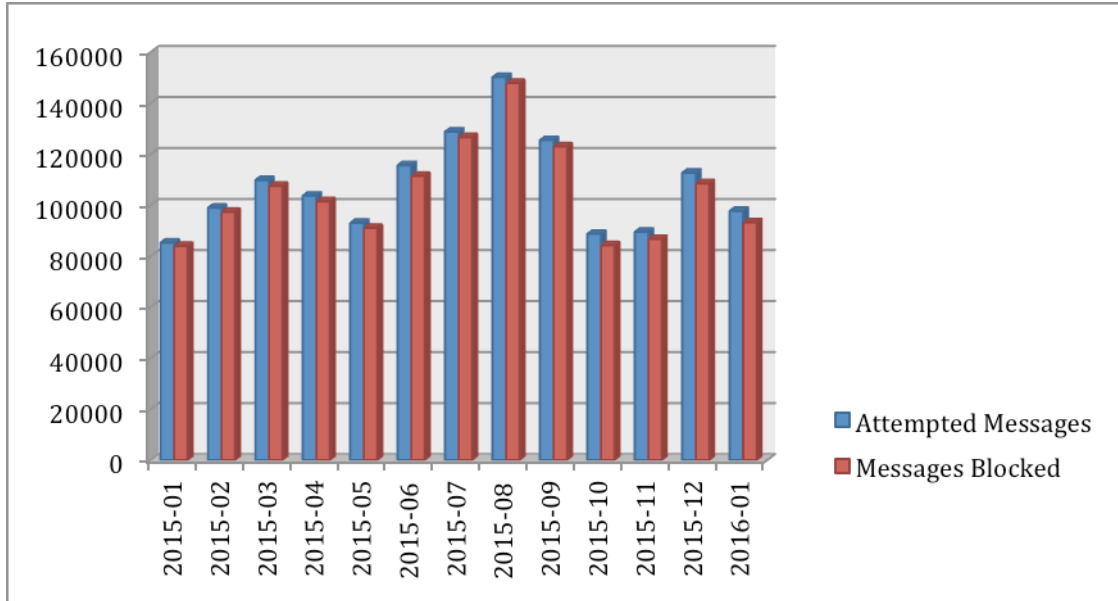


## CCSDS Mailman Summary SPAM Report – January 2016

January 1, 2016 – January 31, 2016

Total attempted messages sent to Mailman were **97713**. **93177** were blocked because they were flagged as SPAM. Within that SPAM **2** of the messages contained a virus. This means that only **4536** messages were not flagged as SPAM, and were delivered to the CCSDS Maillists for either immediate posting, or further moderation by the CCSDS list owners.



### Attempted Messages Sent to Mailman

Refers to the number of times the software has received a message, fully. Means that each time a client connected delivered a full envelope and DATA stream and passed an end-of-data command.

**97713**

### Message Dropped (SPAM)

Refers to messages dropped due to SPAM/Virus policy violations of any sort.

**93177**

### Message Dropped (SPAM) that Contained Virus

**2**