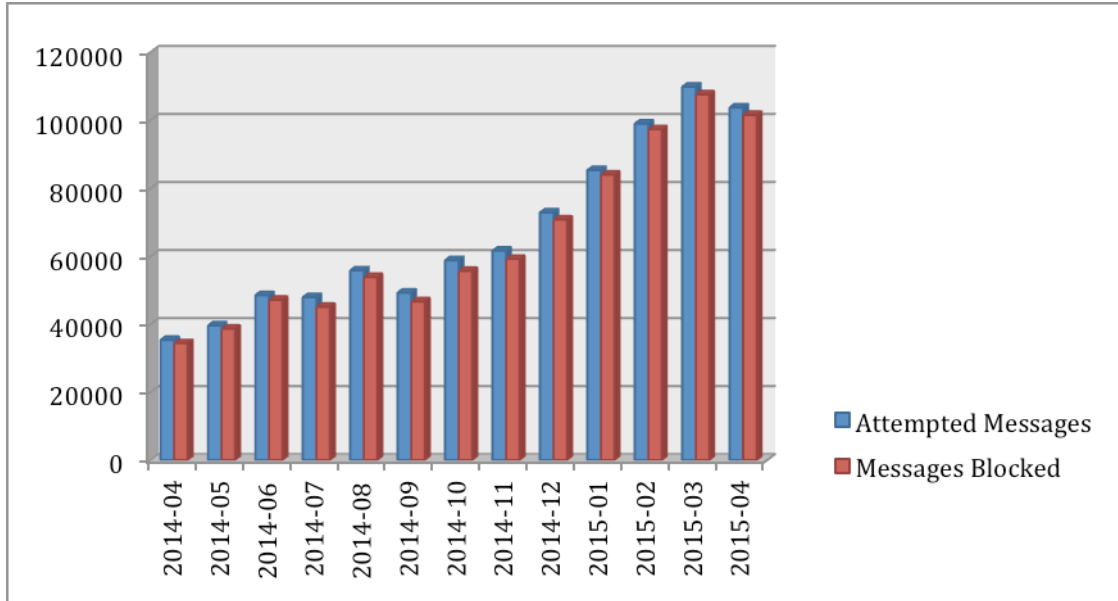


## CCSDS Mailman Summary SPAM Report – April 2015

April 1, 2015 – April 30, 2015

Total attempted messages sent to Mailman were **103725**. **101551** were blocked because they were flagged as SPAM. Within that SPAM **1** of the messages contained a virus. This means that only **2174** messages were not flagged as SPAM, and were delivered to the CCSDS Maillists for either immediate posting, or further moderation by the CCSDS list owners.



### Attempted Messages Sent to Mailman

Refers to the number of times the software has received a message, fully. Means that each time a client connected, delivered a full envelope and DATA stream and passed an end-of-data command.

**103725**

### Message Dropped (SPAM)

Refers to messages dropped due to SPAM/Virus policy violations of any sort.

**101551**

### Messages Dropped (SPAM) that Contained Virus

**1**