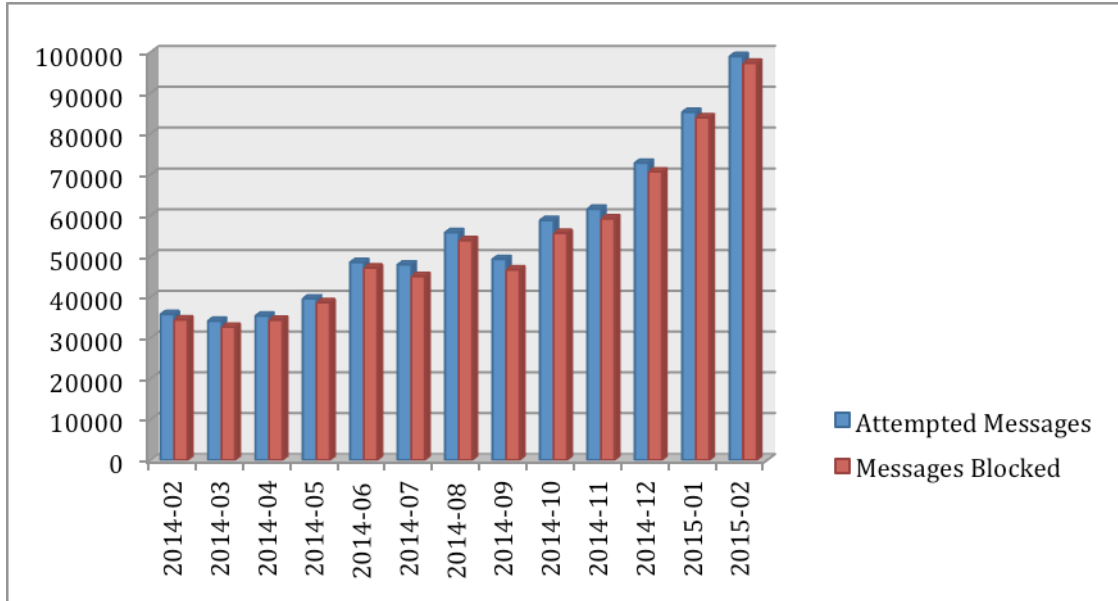


## CCSDS Mailman Summary SPAM Report – February 2015

February 1, 2015 – February 28, 2015

Total attempted messages sent to Mailman were **98970**. **97327** were blocked because they were flagged as SPAM. Within that SPAM **167** of the messages contained a virus. This means that only **1643** messages were not flagged as SPAM, and were delivered to the CCSDS Maillists for either immediate posting, or further moderation by the CCSDS list owners.



### Attempted Messages Sent to Mailman

Refers to the number of times the software has received a message, fully. Means that each time a client connected, delivered a full envelope and DATA stream and passed an end-of-data command.

**98970**

### Message Dropped (SPAM)

Refers to messages dropped due to SPAM/Virus policy violations of any sort.

**97327**

### Messages Dropped (SPAM) that Contained Virus

**167**